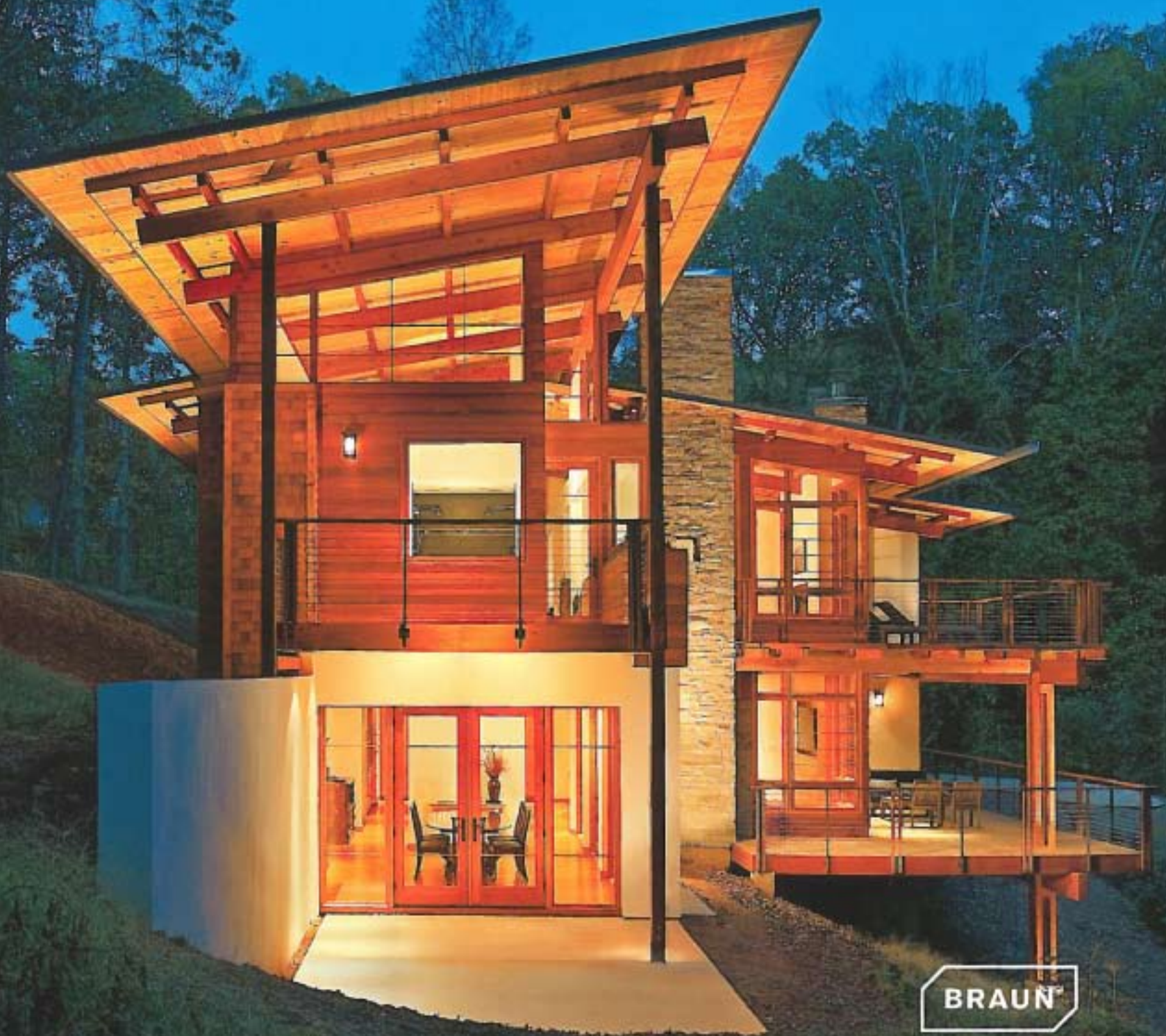


Chris van Uffelen

ECO Living



BRAUN®



↑ | Exterior approach

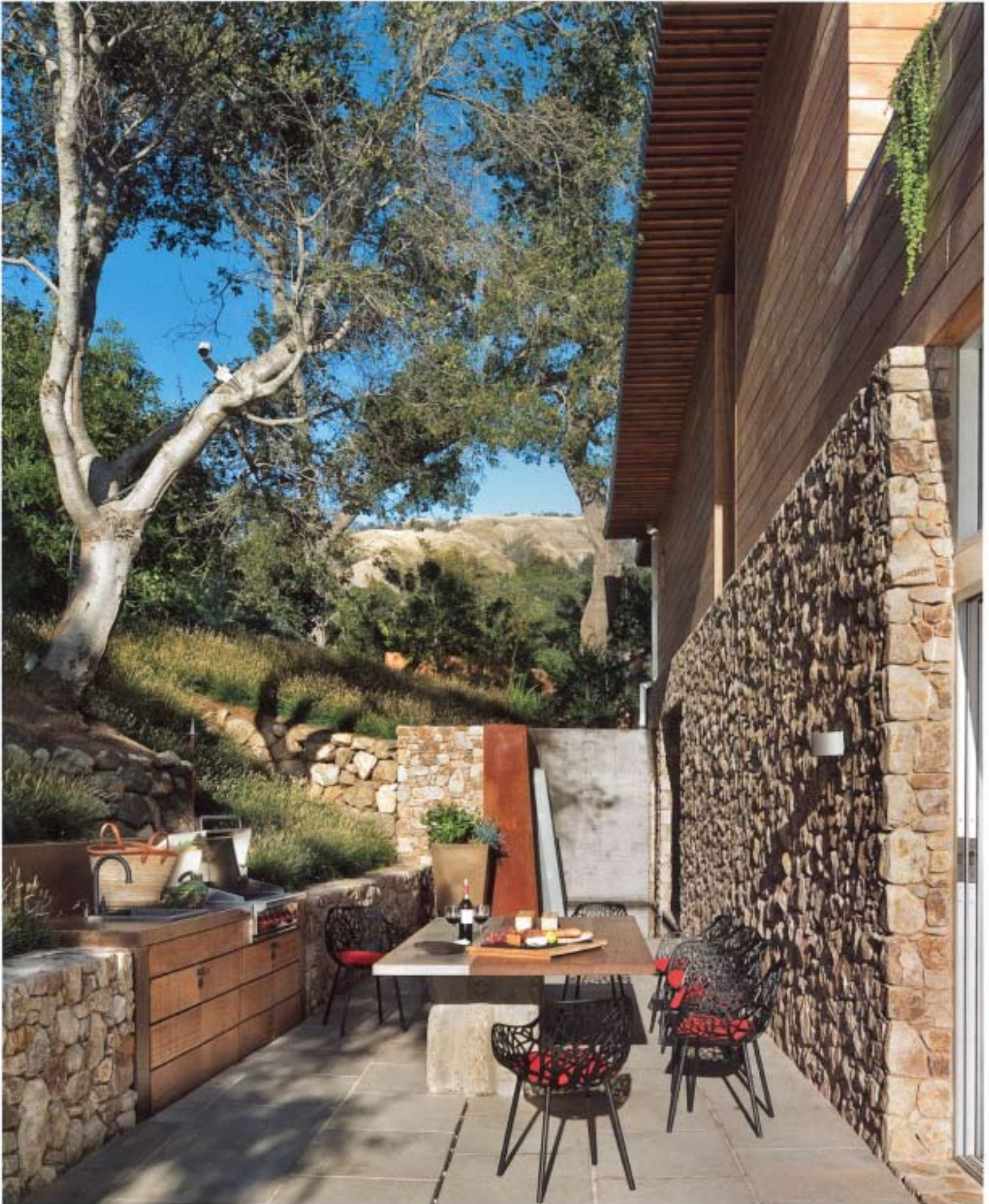
→ | Possibility to gather outside

Coastlands House

Big Sur

This house is located in a grove of mature oak trees, on a site that slopes down to meet the Pacific Ocean. The design aimed to restore the landscape and create a sustainable and energy-sufficient home providing residents with maximum privacy and emphasizing the importance of fluid connections between interior and exterior. The residence has been built with a heavy stone base, juxtaposed by a light steel and glass cantilever. Interior floor finishes harmonize with architectural elements and, together with the walls patios and decks, are not only integrated into the modern architecture but also merge with the surrounding nature.

Address: Big Sur, California, USA. **Eco engineers:** Ray Slaughter Electrical, Axiom Engineers.
Structural engineers: Pacific Engineering Group. **Client:** confidential. **Completion:** 2009. **Ecological aspects:** solar energy, 97% recovery; continuous ventilation system, cross ventilaton; low flow fixtures; green roof; recycled and local material; low VOC paints.

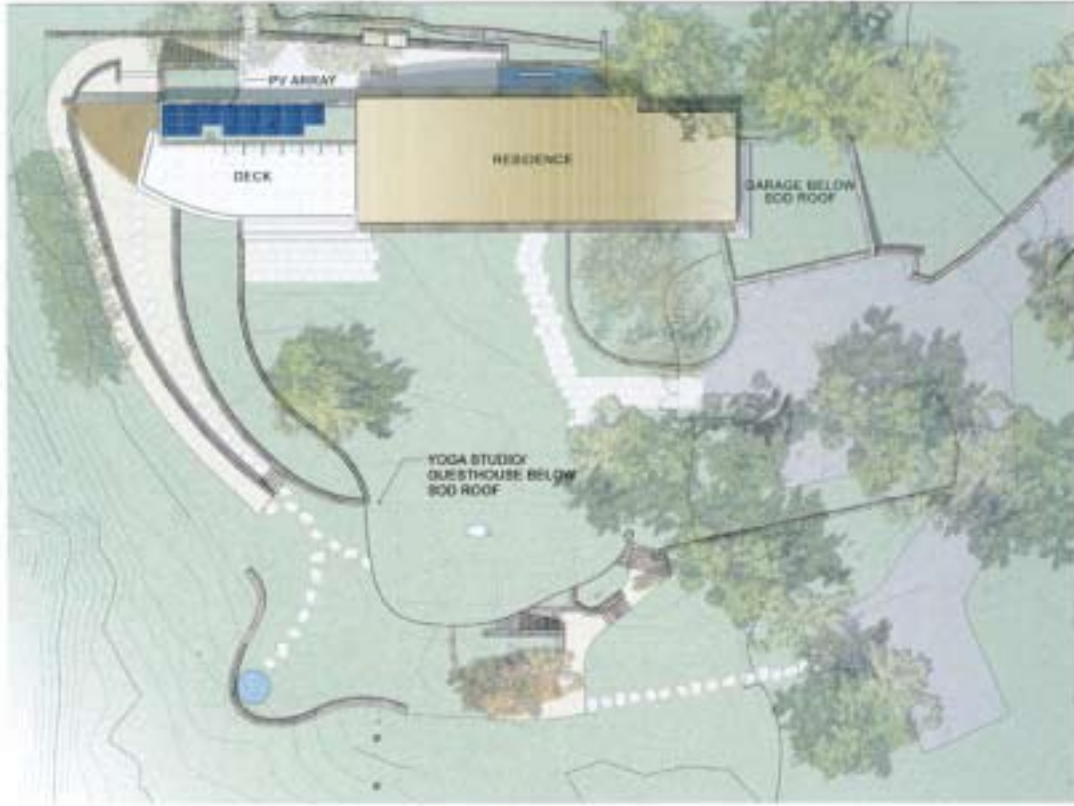




↑ | Rough rockwall, running through the kitchen area

← | View over the ocean, from the dining room





↖ | Site plan
↓ | Sun deck

